

ANNUAL REPORT 2023-24



Narottam Lalbhai Rural
Development Fund

CONTENTS

LEGACY	01
MISSION, STRATEGY & VALUES	02
MESSAGE FROM THE CHAIRMAN	03
PROGRAMMES & INITIATIVES	05
FINANCIAL HIGHLIGHTS	34
ACKNOWLEDGEMENT	35
MAKE A DIFFERENCE	36

LEGACY

Narottam Lalbhai Rural Development Fund (NLRDF) was set up in 1978, as a Public Charitable Trust by Arvind Mills Ltd. of the Lalbhai Group. It stands on the principles & philosophy of service to mankind.

In the past few decades since its inception, NLRDF has evolved into a **grassroots organization dedicated to holistic development of rural & tribal communities**, focusing on specially tailored programs for the poor & underprivileged.

Over 46 years, NLRDF has built credibility in diverse development sectors in **Gujarat**. Its initiatives cover agriculture, forestry, horticulture, animal husbandry, irrigation, energy, healthcare, nutrition, sanitation, education, vocational training, watershed management, water supply, AIDS prevention, women's empowerment & child development.



MISSION, STRATEGY & VALUES

MISSION

The mission is to set in motion a process of comprehensive development in rural India that becomes self-sustaining, strategically reducing disparities among different societal strata.

STRATEGY

Drawing inspiration from nature, where interconnectedness & interdependence characterize life, NLRDF strives for an integrated & holistic approach.

Our strategic interventions aim to address diverse developmental components that collectively contribute to the whole.

VALUES



EMPOWERMENT

We provide individuals with skills, knowledge, & resources to take control of their own development & improve their lives proactively.



COMPASSION

Our actions are driven by empathy & a commitment to support & uplift vulnerable members of society, understanding & alleviating their struggles.



INCLUSIVITY

We embrace diverse voices & perspectives, designing inclusive programs to ensure everyone has equal opportunity to benefit & participate.



SUSTAINABILITY

We focus on creating long-term solutions that address root causes, ensuring positive changes endure within communities beyond our involvement.



INNOVATION

We adopt new ideas & technologies to enhance impact & tackle challenges effectively, continuously improving our methods.



COLLABORATION

We partner with local communities, governments & organizations to amplify our impact & achieve shared goals.



TRANSPARENCY

We openly share our processes, decisions, & financials, fostering trust & credibility among donors & stakeholders.



ACCOUNTABILITY

We fulfill promises & meticulously assess outcomes to ensure every action & expense aligns with our mission's purpose.

MESSAGE FROM THE CHAIRMAN



Narottam Lalbhai Rural Development Fund (NLRDF), since its inception in 1978, has been a dedicated organization committed to rural development, bringing about social change, & promoting sustainable agriculture as the world reels from the effects of climate change.

Rural areas are characterized by their distinct challenges, including limited access to essential services, economic disparities & geographic isolation. These factors contribute to poverty, unemployment & inadequate infrastructure, further exacerbating the inequality gap between rural & urban areas.

NLRDF's mission is to empower rural communities, especially women & farmers, raise their livelihoods & create a sustainable future by intervention through innovative practices, awareness & collaborative efforts.

NLRDF, through its rural development programs, fills crucial gaps in service provision & community support. Through a variety of programs & initiatives in partnership with Reliance Foundation & Better Cotton Initiative, NLRDF has addressed key areas such as: economic empowerment of farmers, community empowerment & women empowerment through financial inclusion initiatives & training in digital literacy.

In the journey towards a more equitable & sustainable future, the intersection of women's empowerment & sustainable agriculture stands as a beacon of hope & progress. As we delve into the pages of this report, we are met with stories of resilience, innovation & unwavering determination, illustrating the transformative power of empowering women in agricultural communities.

As we reflect on the past year, we are filled with gratitude for the unwavering support & dedication of our community. In the face of challenges, we have remained steadfast in our commitment to our mission to uplift those living in far-off rural areas with limited or no access to resources.

The annual report 23-24 serves as a testament to the impact of our collective efforts & the transformative change we have achieved together.

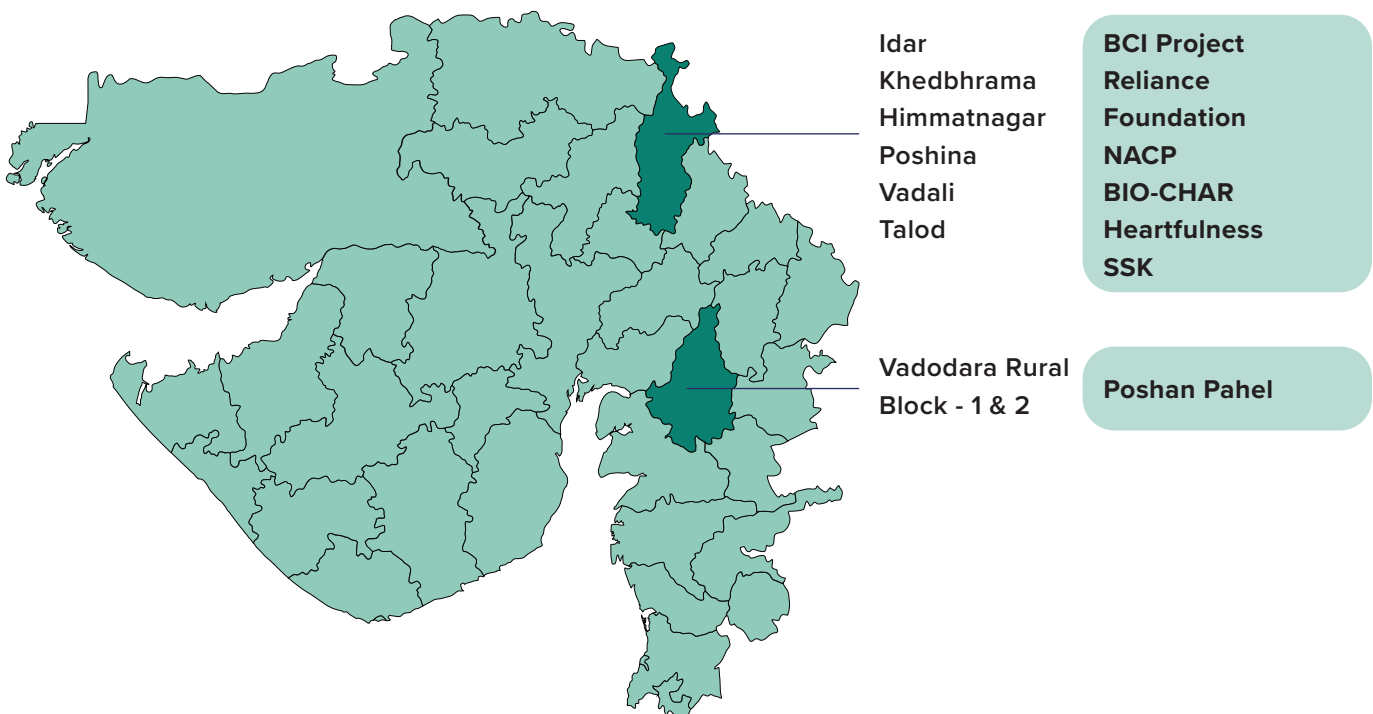
I want to thank all our partner agencies & organizations, stakeholders, staff, volunteers & everyone who have tirelessly worked for those in need. Together, we are creating a brighter future for all.

SAMVEG LALBHAI

FOOTPRINT

NLRDF predominantly works in **Gujarat** & has touched **over 20 districts** of the state. It has reached out to **more than 6 lakh community people** in more than **400 villages of Khedbrahma, Vadali, Idar, Poshina & Talod talukas of Sabarkantha district, & 30 villages of Vadodara district.**

The map below indicates the outreach in Gujarat where NLRDF has undertaken & supported projects to serve the society for over **46 years.**



OUTREACH



Helped
13,500
farmers through our
agricultural projects



Extended support to
12,000
widows through our skill
development program



Nurtured
500
tribal youths under our skill
training program



Empowered
240
young women under our
skill development program

PROGRAMMES & INITIATIVES



POSHAN PAHEL

NOURISHING MINDS FOR A BRIGHTER TOMORROW

INTRODUCTION

The early childhood period spans distinct phases: from conception to birth, birth to 3 years (with emphasis on the first 1,000 days from conception to 24 months) & preschool/pre-primary years (3 to 5/6 years or the age of school entry).

Early childhood is a period of enormous opportunities for a child to learn, develop & build a solid foundation for well-being & life achievements. For optimal growth & development, children need good health, adequate nutrition (especially the first 1000 days from pregnancy till 2 years), quality education/ psychosocial stimulation, good hygiene & sanitation practices at home as well as at the community level.

In Gujarat, the under-five mortality rate is 37.6 per 1000 live births (NFHS 5) with high rates of malnutrition (39% of children below 5y are stunted, 39.7% are underweight, 10.6% are severely wasted), suboptimal IYCF practices & high prevalence of anaemia in children & women. Vadodara district faces similar challenges, prompting the “Poshan Pahal” project by NLRDF funded by K.K Vithani Foundation, Nandesari & supported by UNICEF as a Knowledge partner. Project interventions have been planned to empower the families & the communities to prioritize & focus on early childhood nurturing care & nutrition.



PROJECT AIM & OBJECTIVE

Ensuring that by 2025, pregnant women & children 0-3y have equitable access to essential quality nutrition, health, & early learning that address their need for early childhood development (ECD). Parents are more engaged in nurturing care, responsive feeding & positive parenting.

PROJECT AREA

The project directly benefits approximately 10,520 direct beneficiaries annually, including pregnant women, breastfeeding mothers, children under 3 years & their spouses. It focuses on 150 Anganwadi Centers (AWCs) selected for demonstrating early childhood development (ECD) activities in Vadodara Rural Block. Eight ICDS sectors under Vadodara Rural Block are included: Angadh, Dashrath, Koyali, Phjalpur, Ranoli, Sakarda (including Nandesari), Sindhrot & Sokhda.



The diverse activities implemented by NLRDF under the project are as mentioned below:



SYSTEM STRENGTHENING

- Capacity Building of Poshan Pahal Team leads
- District level ToT
- Sensitization of PRI members
- Training of AWWs
- Training of FHWs/ANMs & ASHAs
- District-level workshop for ICDS officials
- Capacity building of private hospitals staff
- Sensitization of SHGs for FNHW component



COMMUNITY ENGAGEMENT

- Community Mapping
- Individual & group counselling
- Brain Wiring Game
- Strengthening Community Events
- Celebrating World Breastfeeding Week (1-7 August)
- Poshan Maah Celebration



AWARENESS CAMPAIGN

- Wall Painting & Wall Writing
- Take-away SBCC material
- Message Campaign



SYSTEM STRENGTHENING

Here the focus is on strengthening systems including positive parenting & responsive feeding for both healthcare providers & communities. The goal is to ensure improved access to services & promote long-term sustainability in responsive feeding & nurturing care.

CAPACITY BUILDING OF POSHAN PAHEL TEAM LEADS

Project team leads participated in a four-day state training in Gandhinagar from 3rd to 6th July 2023. The training focused on enhancing technical support for District Consultants & Project Coordinators in infant & young child feeding practices & early childhood development.



DISTRICT-LEVEL TRAINING OF TRAINERS (TOT)

A four-day training session was conducted in Vadodara from 11th to 14th July 2023, supported by UNICEF Gujarat. A total of 46 participants, including Health & ICDS staff, DRDA Officials, & Poshan Pahal Project team members, were trained to become effective trainers. The training aimed to equip them with comprehensive knowledge & practical skills to disseminate key messages on nutrition during early childhood development & maternal health.

SENSITIZATION OF PRI MEMBERS

On December 28, 2023, a workshop was organized for Sarpanches at Jhilla Panchayat in Vadodara, supported by the Taluka Development Officer (TDO). A total of 40 members, including PRI members, Talatis & Taluka representatives, participated to understand their role in promoting early childhood development & raising awareness within their communities.





TRAINING OF ANGANWADI WORKERS (AWWS)

In January 2024, a two-day training program was conducted for 146 AWWs in three batches. The training focused on improving their technical capabilities related to the first 1000 days of life & nutrition. UNICEF provided SBCC materials & kits including child models, breast models, measuring cups & spoons to enhance their counselling skills.

TRAINING OF FHWS/ANMS & ASHAs

In January & February 2024, PHC-wise collaborative training sessions were held to provide technical knowledge on early childhood development, infant & young child feeding practices & positive parenting. A total of 143 ASHAs & 35 FHWS/ANMs participated, facilitated by the Taluka Health Officer. They received SBCC materials & modules to enhance their counselling.



DISTRICT-LEVEL WORKSHOP FOR ICDS OFFICIALS

In February 2024, a one-day workshop convened for 76 participants, including 55 supervisors, 6 Child Development Project Officers (CDPOs), & 15 Poshan Abhiyan staff from ICDS. The workshop aimed to sensitize them to the Poshan Pahal project & address queries related to the Poshan tracker application. Technical experts from State & National level teams, along with the UNICEF team, facilitated the workshop.

CAPACITY BUILDING OF PRIVATE HOSPITALS STAFF

Various technical sessions were conducted at three private hospitals for nursing staff to promote early initiation of breastfeeding as well as improve infant & young child feeding practices. SBCC modules & booklets were distributed to all hospital staff to enhance their counselling skills.





SENSITIZATION OF SELF-HELP GROUPS (SHGS) FOR FNHW COMPONENT

From August 2023 to March 2024, a total of 45 SHG meetings were held at the village level. These meetings facilitated discussions & knowledge exchange on early childhood development, mother-child health & nutrition, contributing to enhanced awareness within the community.



COMMUNITY ENGAGEMENT ACTIVITIES

In the project timeline, a range of initiatives have been implemented to ensure community engagement & extend the project's outreach. The activities are as mentioned below.



COMMUNITY MAPPING

Cluster Resource Persons (CRPs) conducted community mapping activities to gather essential information about the village, fostering a deeper understanding of the local context & key stakeholders.

STRENGTHENING COMMUNITY EVENTS

CRPs played a pivotal role in organizing & regularizing community-based events such as “Bal Tula divas”, “Suposhan Samwad”, “Annprashan Divas”, “Mamta Divas” & ANC clinics. These events included counselling sessions aimed at improving child & maternal health, nutrition & overall development.



BRAIN WIRING GAME

Deployed as an interactive tool during community outreach, the Brain Wiring Game illustrated the relationship between brain development & nutrition practices for mothers & children. This game effectively engaged pregnant/lactating mothers & their spouses in learning sessions.



INDIVIDUAL & GROUP COUSSELLING

CRPs conducted regular home visits in collaboration with Frontline Workers to provide personalized counselling on Early Childhood Development (ECD) & Infant/Young Child Feeding (IYCF) practices. They utilized interactive materials like flipbooks, breast models, dummy dolls & videos to promote positive behaviour change among rights-holders & their families. CRPs established 22 father support groups & 31 mother support groups at the village level, organizing monthly sessions to educate participants about the importance of the first 1000 days of life & encourage optimal ECD practices.

POSHAN MAAH CELEBRATION

The Poshan Pahal team collaborated with Health & ICDS departments to support Poshan Maah activities. Twelve programs were successfully executed, reaching 550 rights-holders. A Nukkad Natak in Akodiya village, organized in partnership with the Sarpanch, Health & ICDS departments, featured District Development Officer (IAS), CDHO, PO-ICDS, Taluka members & representatives from UNICEF & NLRDF to raise mass awareness.



WORLD BREASTFEEDING WEEK

During World Breastfeeding Week (1-7 August), 17 programs were conducted in collaboration with the Health Department & Integrated Child Development Services (ICDS), reaching 172 rights-holders to promote breastfeeding practices.



AWARENESS CAMPAIGN

We raised awareness among the community about the importance of various components of the program through art, pamphlets & educative campaigns.

WALL PAINTING & WALL WRITING

As a part of project's awareness campaign, a total of 2381 wall writings & 912 wall printings were executed. The primary objective was to raise awareness among the community about the significance of the first thousand days of life, the active participation of fathers/husbands, as well as breastfeeding techniques & positioning & incorporation of 5 Food groups into daily diet.

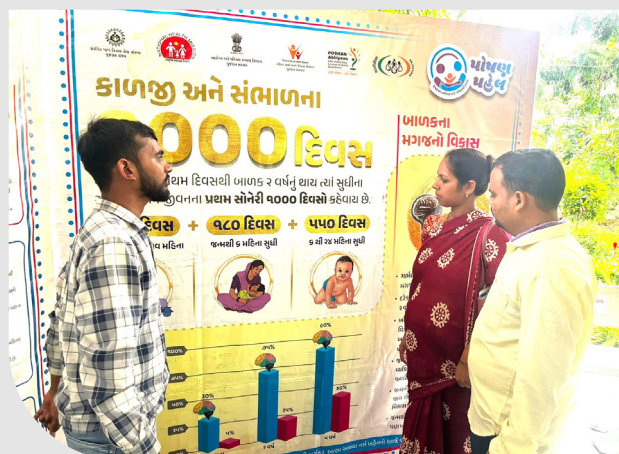


TAKE-AWAY SBCC MATERIAL

SBCC materials covering a range of topics, including ANC care, breastfeeding facts, developmental milestones, a guidebook for parents, & activities for intellectual development, were developed & distributed to both direct & indirect rights-holders. Healthcare providers responded very positively to these materials, praising their relevance & easy acceptance among the communities. All materials were distributed to Health, ICDS staff, SHG members, Panchayat members & rights-holders to aid their understanding.

MESSAGE CAMPAIGN

This campaign's primary goal was to raise awareness of the importance of the first 1000 days & ECD. Targeting stakeholders, frontline workers, & rights holders was a deliberate strategy behind the campaign. 6822 individuals were reached with messages concerning kangaroo mother care (KMC), starting breastfeeding in less than an hour, & fostering a happy home environment when there is a pregnant woman in the house. These messages were composed in the local language.



ACHIEVEMENTS

78% of pregnant women have completed 4 ANC's, above the district average of 65.9%.

72.4% of mothers initiated breastfeeding within one hour of birth, above the district average of 59.6%

82% of mothers exclusively breastfed for 6 months, above the district average of 64%.

86% of mothers timely initiated complementary feeding & continued breastfeeding. This data isn't recorded by the district or state.

Out of 11,768 registered children (0-6 years), 11,646 have regular growth monitoring at AWC.

1432 fathers (47.7%) out of 2900 are involved in responsive feeding & positive parenting.

ENHANCING SELF - RELIANCE & RESILIENCE

OF RURAL COMMUNITIES IN SABARKANTHA DISTRICT

INTRODUCTION

Funded by the Reliance Foundation & implemented by the NLRDF, the project -- "Enhancing self-reliance & resilience of rural communities in Sabarkantha District" - has been launched to address & uplift the community. Expanding reach to 225 villages of five blocks of Sabarkantha District, our holistic approach focused on comprehensive village development plans, collaborative efforts, capacity building, sustainable livelihoods, & community empowerment.

The project aims to inculcate adaptability & mitigation among community to enhance climate resilience. It also promotes diversification & aims to make agriculture & non-farm livelihoods substantial in order to increase income from agriculture & mitigate household income risks. Supporting women empowerment for greater financial independence & decision-making roles is also key.

PROJECT AIM & OBJECTIVE



COMPREHENSIVE

Developing comprehensive approach for Climate Smart Village & Climate Resilient Index as part of progress evaluation.



IMPACT EVALUATIONS

Conducting periodic evaluations of the impact of resilience-building activities for community.



NUTRITION FOCUS

Prioritizing food production systems for women, focusing on their burden, nutrition & access to drinking water.



CLUSTER GROWTH

Establishing livelihood clusters, emphasizing the needs of communities (e.g., goat rearing, dairies & vegetable cultivation).



COLLABORATIVE

Strengthening collaboration with departments at the taluka & district levels.

KEY ISSUES:

- Climatically vulnerable region experiencing altered rainfall patterns and prolonged dry spells. Unpredictable rainfall.
- Decline in crop productivity: Major crops like cotton, groundnut, wheat, maize, red gram, chana and vegetable cultivation showing lower yields compared to potential yields.
- Water scarcity for irrigation: It is affecting sustainable income generation for farmers. Three out of five blocks where we intervened as part of our project were declared as 'Dark zone'.
- Lack of diversified livelihood sources: Limited opportunities beyond farming and cattle rearing, particularly among youths and women.
- Developmental challenges: Lack of employment opportunities, financial inclusion, health issues (anaemia, malnutrition), low productivity in cattle breeding, inadequate access to drinking water, and women empowerment.
- Need for collaborative efforts: Government departments, private players, NGOs, and technological institutions need collaboration to address these challenges effectively.





KEY INTERVENTION OF THE PROJECT

COMMUNITY MOBILIZATION

- Community meetings & consultations were conducted to understand local challenges & priorities.
- Community-based committees comprising representatives from different stakeholders were established to ensure inclusive decision-making.
- Awareness campaigns on climate change, sustainable agriculture practices & alternative livelihood options were organised.
- Community institutions such as Gram Panchayats, women's collectives & farmer groups were strengthened through capacity-building workshops & training sessions.
- Active participation of women & youth in decision-making processes & leadership roles was encouraged.
- Support for the establishment of sustainable community enterprises & cooperative ventures was provided to enhance economic empowerment & self-reliance.

IMPLEMENTATION

- Various activities such as the promotion of climate-smart agricultural practices, establishment of community-managed irrigation systems & introduction of income-generating activities like intercropping farming, imitation & animal rearing were introduced.
- Access to resources & technologies required for implementation, which included seeds, tools, equipment & training materials, were facilitated.
- Partnerships with local authorities, NGOs & private sector entities were fostered to leverage additional support & resources for project implementation.





PROJECT ACTIVITIES



CAPACITY BUILDING

Provide training sessions for Gram panchayat on climate resilience planning. Conducted workshops to enhance the capacity of farmer & FPOs.

WATER MANAGEMENT

Making CWB at community Level, implementing community-based water harvesting system to address water demand at the village level. Promoting efficient irrigation methods such as drip / sprinkler rain pipe & explore & introduce new water saving technology like furrow irrigation.

AGRICULTURE PRACTICES

Introduce new agriculture practices & technology suitable for climate resilience & promote cultivation of climate-resilient crop varieties with high yield & shorter growth cycles.

VALUE CHAIN & MARKETS

Work on improving the agriculture value chain from production to markets, facilitate linkages between farmer & market to ensure fair returns.

LIVELIHOOD STRENGTHENING

Strengthen existing livelihood programs & explore opportunities for diversification, promote climate-resilience options to enhance sustainability in all three clusters.

FINANCIAL INCLUSION & DIGITAL LITERACY

The initiative empowered women to explore social security schemes & digital literacy for daily uses.

Adopting a participatory & holistic approach, the intervention in the year 2023-24 addressed the multifaceted challenges faced by rural communities in Sabarkantha district & promoted resilience, sustainability & inclusive development.

CLIMATE RESILIENCE FOR SUSTAINABLE DEVELOPMENT (CR4SD)

CR4SD Identified gaps in water management & agricultural production, implementing integrated natural resource management & climate-resilient farming practices. Key interventions included water harvesting infrastructure, efficient irrigation & promoting diversified nutrient-rich food consumption.

NO.	ACTIVITIES	NUMBERS (REACH & IMPLEMENTATION)
1.	No. of Villages initiated climate resilience measures & integrated into village/Gram Panchayat Development Plan	47
2.	No. of Villages conducted participatory assessment of shared resources & creating management plan	47
3.	Additional water harvesting capacity created	14.45 Lakh
4.	Area (in Hectare) brought under efficient management of water	300 Ha
5.	Area (in Hectare) covered with conservation & restoration of resources	370 Ha
6.	No. of villages with improved access to drinking water	50
7.	Area (in Hectare) brought under climate adaptive farming practices (soil fertility improvement, resistant seed, intercrop, trap crops & INM)	1571 Ha
8.	Households with diversified food production & consumption	1500
9.	Area (in Hectare) covered under nutrition-rich & bio fortified crops	241





VIRPUR : ON THE PATH TO SUSTAINABLE DEVELOPMENT

Virpur village in Sabarkantha district, home to 1100 houses & various ethnic groups, primarily engages in farming, with about 70% of families involved in agriculture & hosting around 2000 livestock. In 2022-23, Reliance Foundation & NLRDF addressed village development issues by training Gram Panchayat (GP) representatives & creating a development plan. They organized training on sustainable farming, nutrition, livelihood, animal husbandry & water management. NLRDF facilitated these efforts, leading to state-level recognition for

Virpur's Gram Panchayat on August 15, 2023. Today, Virpur excels in advanced farming, livestock feed, livelihood opportunities, irrigation, drinking water, community cohesion & environmental protection, serving as a model for other villages in the region.

INTEGRATED VALUE CHAIN DEVELOPMENT (IVCD)

IVCD-promoted technology adoption, capacity building, market access & collective approaches & it empowered farmers with modern agricultural practices & facilitated robust market linkages.



NO.	ACTIVITIES	NUMBERS (REACH/IMPACTED)
1.	No. of Hectare area under improved production practices/ new agriculture technologies	1569.54
2.	No. of Farmers adopting & benefiting from Climate Resilient &/or productivity	1570
3.	No. of women improved access to entitlements, No of Farmer collectives (FPOs/ SHG Federations/Coop/ PACS/ Informal group of farmers) provided techno-managerial support &/or linkages	7
4.	No. of producers benefitting from marketing of their produce /accessing products & services from Farmer Collectives	1819
5.	INR Cr Value of produce marketed & inputs/services sourced through farmer collectives	2.32

INTERVENTION OF HIGH YIELD VARIETY & MULCHING

Ravji Bhai Patel, aged 54 & residing in Kanpur village, Idar Block, cultivates wheat, maize & fodder on his 5-acre land & owns a buffalo for family milk needs. In 2022-23, Ravji Bhai participated in a watermelon cultivation demonstration. He received training in December 2022 alongside 10 other farmers on watermelon cultivation, starting with a nursery at home. He planted 3500-4000 watermelon plants with mulching on one acre.

Following expert advice on integrated nutrition & pest management, Ravji Bhai harvested approximately 23 tons of watermelon in March-April 2023, selling it at Rs.5 per kg. His efforts resulted in a profit of Rs. 75,000 over 3 months.

BIO-GASTER INTERVENTION

Bio-Gaster (Bio-Digester) is a sustainable technology that uses anaerobic digestion to convert organic waste into biogas & nutrient-rich bio fertilizer. It holds promise for sustainable agriculture & renewable energy. With growing demand, Bio-Gasters are expected to become more widely adopted.

Last year, NLRDF organized exposure visits, awareness meetings, training, & demonstrations in 17 villages. In Sabarkantha district, three self-help groups (SHGs) & 24 farmers adopted this new

technology. NLRDF provided Bio-Gaster materials & farmers contributed to tank construction & installation costs.

DIVERSIFYING RURAL INCOME & WOMEN ENTREPRENEURSHIP (DRIWE)

This focused on diversifying income sources, particularly for women, through awareness programs, livelihood clusters & financial inclusion initiatives. Under the programme, dairy & vegetable clusters were set up. While SHGs were supported, work was carried out to enhance digital & financial literacy.



NO.	ACTIVITIES	NUMBERS (REACH/IMPACTED)
1.	No. of SHGs/ Producer Groups / Collectives (Men & Women) engaged for income enhancement	250
2.	No. of persons supported to improve existing livelihood / Persons supported in taking up additional livelihood in Farm & Non-Farm Sector	2264
3.	No. of women Improved access to entitlements, schemes & financial products for financial inclusion	1991
4.	No. of Women with improved digital & financial literacy engaged in livelihood activities	2590



TALES OF CHANGE

GEETABEN PARGI

Geeta Ben Kamlesh Bhai Pargi, aged 40 & residing in Janjwa Pani village, Sabarkantha, supports her family of six on 6 bighas of land & three milch animals. Situated in a hilly, tribal area near Rajasthan, the village lacks basic facilities & adequate water supply, making traditional farming insufficient.

As an active member of Chamunda Sakhi Mandal, Geeta Ben received skills training, prompting her group to venture into floriculture last year. Twenty-four women, each cultivating flowers on 1 bigha of land, faced challenges but benefited from proximity to markets in Khedbhra & Ambaji, enabling sales. Geeta Ben earned 12,000 rupees from flower sales this year, with others earning between 5,000 &

12,000 rupees. This initiative significantly boosted the women's confidence, motivating them to sustain & expand their efforts in the future.

PARMAR NIRUBEN

Parmar Niruben Jitendra Bhai from Kabso village, Idar Block, embodies the transformative impact of education & community support in rural areas. Despite limited resources, she enhanced her family's livelihood through vegetable cultivation after receiving training & support from Reliance Foundation & NLRDF. Living on 2 bighas of land with three cattle, Niru Ben faced income challenges despite her 12th-grade education. Joining Shivam SHGs two years ago provided opportunities for skill development.

With training in vegetable cultivation techniques from Reliance Foundation & NLRDF, Niru Ben successfully implemented these methods, generating an additional income of Rs. 45,000. Her achievements inspired other village women to pursue similar opportunities. Despite obstacles like limited resources & market fluctuations, Niru Ben's determination led to financial stability & improved quality of life. Her journey highlights the importance of educating & empowering rural women, demonstrating the impact of supporting sustainable agriculture & inclusive development.



ACHIEVEMENTS

47 Gram Panchayat (GP) Prepared climate resilience plan (GPDP).

1445379 Cum Additional water harvesting capacity created with interventions of Check dam repairing, pond repairing & earthen dam in 25 Villages.

382 Ha area covered under soil & water conservation & restoration of common resources like common plantation, CCT, BB, etc.

50 Villages brought under improved under access of drinking water facility through pipeline gapping or tap water interventions.

1571.57 Ha land covered under climate adaptive farming with demonstration of soil sample & mix cropping seeds, Chana Seed, seed treatment, Wheat seed etc.

Around 1648 Ha covered under diversified food consumption & production & 242 Ha land brought under bio fortified & nutrient rich crop cultivation.

Around 1570 Farmers benefited through improved practices & new agricultural technology like solar trap, nano urea, Rain pipe irrigation, Nepping, Sagrika, in their 1569.54 Ha land.

250 Self Help Groups or producer or collective groups liked for their income enhancement activity like imitations, dairy, group-based enterprise, etc.

2004 female & 260 males are supported for improve existing livelihood & taking up additional non-farm & farm-based livelihood activity.

1991 males & females are supported to access different social security schemes.

Around 2590 women's Digital & Financial literacy improved through organize many meetings in 58 villages.

BETTER COTTON INITIATIVE

BCI PROJECT

INTRODUCTION

Arvind Limited & Narottam Lalbhai Rural Development Fund have been operating the BCI project with 13500 farmers in 97 villages of Idar, Vadali, & Khedbrahma talukas of Sabarkantha district for the past three years. Under this project, information & training is provided to cotton growing farmers to reduce their costs & increase production. Furthermore, the three

project units conduct various activities throughout the year & facilitate access to government schemes to ensure children of laborers working in fields receive uninterrupted education through school connections.



PROJECT ACTIVITIES

PRA (BASELINE SURVEY)

PU managers & coordinators trained all Field Facilitators (FF) on conducting Participatory Rural Appraisal (PRA), including the required materials & participant selection. Subsequently, FF colleagues conducted surveys in each village within the PU area using a baseline questionnaire. PRA surveys offer insights into the social, economic & geographical conditions of the villages. Based on this data, Targeted Beneficiary Plans (TBP) & Community Implementation Plans (CIP) are prepared following

BCI guidelines. All subsequent activities are then executed in accordance with these plans.

SOIL TESTING

Soil testing identifies nutrient deficiencies, guiding farmers on precise fertilizer applications to cut costs & boost production. Proper soil sampling, following KVK (Krishi Vigyan Kendra) guidelines, is crucial for accurate testing & recommendations.



WATER TESTING

Water quality assessment includes measuring TDS (Total Dissolved Solids), hardness, EC (Electrical Conductivity) & pH levels to determine suitability for agriculture across different areas. Recommendations from KVK (Krishi Vigyan Kendra) guide adjustments & improvements based on these findings.

BIODIVERSITY

Farmers are advised to enhance biodiversity by planting trees along field borders, practicing intercropping & cultivating border & trap crops. Biodiversity is assessed through on-farm & off-farm mapping & farmers receive medals (bronze, silver, gold) as recognition for their efforts. Collaboration with the forest department is fostered for joint tree planting initiatives, including planting trees in homesteads.

TREE PLANTING

As part of biodiversity & environmental conservation efforts, the organization conducts tree planting in all three clusters every year. Field staff facilitate both individual & collective tree planting by farmers. Farmers plant trees along the borders of their fields & in communal areas.

PROGRAMMATIC TRAINING

The training begins with an introduction to the organization & details about the project's objectives & approaches. It aims to familiarize participants comprehensively with the project. Emphasis is placed on reducing farmers' costs & boosting production as key goals of the training.





PRE-SOWING TRAINING

Pre-sowing training educates farmers on essential precautions before sowing, including soil preparation such as testing, deep plowing & clearing field borders. It covers seed selection, treatment, narrow-spacing planting & effective irrigation methods. Initially, coordinators & PU managers instruct Field Facilitators (FFs), who subsequently conduct training sessions & meetings with small groups of farmers to disseminate this knowledge.

AFTER-SOWING TRAINING

After-sowing training educates farmers on post-sowing precautions. They are advised against using chemical pesticides for the first 45 days, recommending neem oil or organic alternatives if necessary. If chemical pesticides are used after this period, farmers should strictly adhere to label instructions. Minimizing herbicide use and excessive inter-cultivation is emphasized. Training also covers safe pesticide handling and proper fertilizer management, such as applying NPK 240-50-150 in five equal parts at specific intervals (30, 60, 75, 90, and 105 days). Coordinators initially brief Field Facilitators (FFs), who then conduct sessions with small groups of farmers to disseminate this information effectively.

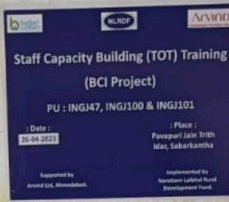
USE OF PPE KIT

Farmers receive comprehensive information about various types of PPE kits available for pesticide spraying, including their benefits through demonstrations. They are educated about the risks associated with pesticide exposure & the body parts susceptible to absorption & harm. Farmers unable to afford full PPE kits are encouraged to use minimal protection such as long-sleeved shirts, pants, hats, goggles, boots, masks & gloves. Training sessions & small group meetings effectively convey the importance of using PPE for body protection to both farmers & laborers.

PICKING TRAINING

Cotton picking is a very important task, & negligence in this can lead to financial loss for the farmer. Important considerations while picking cotton include:

1. Picking should be done after sunrise.
2. Picking should be done from the bottom upwards.
3. Cotton should be picked in clean cloth bags.



LABOUR TRAINING

Labour training is provided to farmers & all partners. This includes discussions about the rights & entitlements of labourers. Information about minimum wages & equal pay for men & women is given. They are also informed to ensure that no form of coercion occurs on the farm & that none of their rights or entitlements are violated.

GENDER EQUALITY TRAINING

Gender equality training is conducted to ensure that no gender discrimination occurs during any type of work on the farm. Initially, the training is provided to the Field Facilitators (FF) by the resource person or coordinator & the PCM. Subsequently, the FFs convey this information to farmers & laborers through training & meetings in small groups & individually.

FOOD SPRAY TRAINING

Food spray on farms follows IPDM (Integrated Pest & Disease Management) principles. Corn is planted along borders to control diseases & pests, & food spray is applied similarly to how it is done for corn. Alternatively, taller crops than the main crop are used, with food spray applied using yeast in a comparable manner.

BIOLOGICAL CONTROL

Biological control offers a sustainable alternative to chemical pesticides & fertilizers, which can harm soil health & the environment. Using biological agents like *Beauveria bassiana*, *Trichoderma*, *Herzinyum*, *Metarhizium* & *Trichocard* improves soil health, lowers costs for farmers & promotes environmental protection.

NATURAL FARMING TRAINING

The method that strengthens nature to provide all the necessary resources for the growth & good production of plants is called natural farming. In true natural farming, the expenses for the main crop should be covered by the companion crops, & the main crop should be seen as a bonus. To practice natural farming, it is essential to use the following Panchamrut:

1. Jeevamrut
2. Beejamrut
3. Mulching
4. Waaphasa
5. Biodiversity

IEC CAMPAIGN

Under the BCI project by NLRDF, biannual IEC campaigns & rallies aim to raise awareness among farmers. These events discourage the use of prohibited & highly hazardous pesticides (HHP) while providing information on government schemes & assistance. Supported by IEC boards, Field Facilitators (FF) & lead farmers, these initiatives promote safer agricultural practices.

DECENT WORK

Under the Decent Work initiative, Field Facilitators (FF) inform marginalized communities in villages about government schemes like old-age pensions, widow assistance & the PM-Kisan scheme. They assist with form completion & ensure beneficiaries receive assistance. Efforts are also made to enroll children of tenant farmers & laborers in primary schools to prevent educational deprivation.

SIGNIFICANT ACTIVITIES CONDUCTED DURING THE YEAR IN 3 PUs

NO.	NAME OF ACTIVITIES	TOTAL BENEFICIARIES
1.	PRA	1865
2.	Soil Testing	92
3.	Water Testing	92
4.	Programmatic Training	11509
5.	Pre – Sowing Training	11851
6.	Tree Plantation	29719
7.	After Sowing Training	11832
8.	Model Farm	33
9.	Labour Training	4640
10.	Gender Training	10755
11.	Food spray training & demo	117
12.	Pheromane Trap Demo	315
13.	School Awareness Activities	24
14.	PPE Awareness Demo/Training	7893
15.	Bio–Diversity Training	9785
16.	Waste De-compost Demo	165
17.	Homemade Pesticide Demo	1929
18.	Self Assessment	39
19.	Lead Farmer workshop	213
20.	Child Labour Awareness Prog	11150
21.	Fiber Quality Training	12034
22.	Bio–char Demo/Training	494
23.	Natural farming Demo/Training	992
24.	Biological control Demo/Lab	2
25.	Descent work	1560
26.	Bio–char Application demo	124

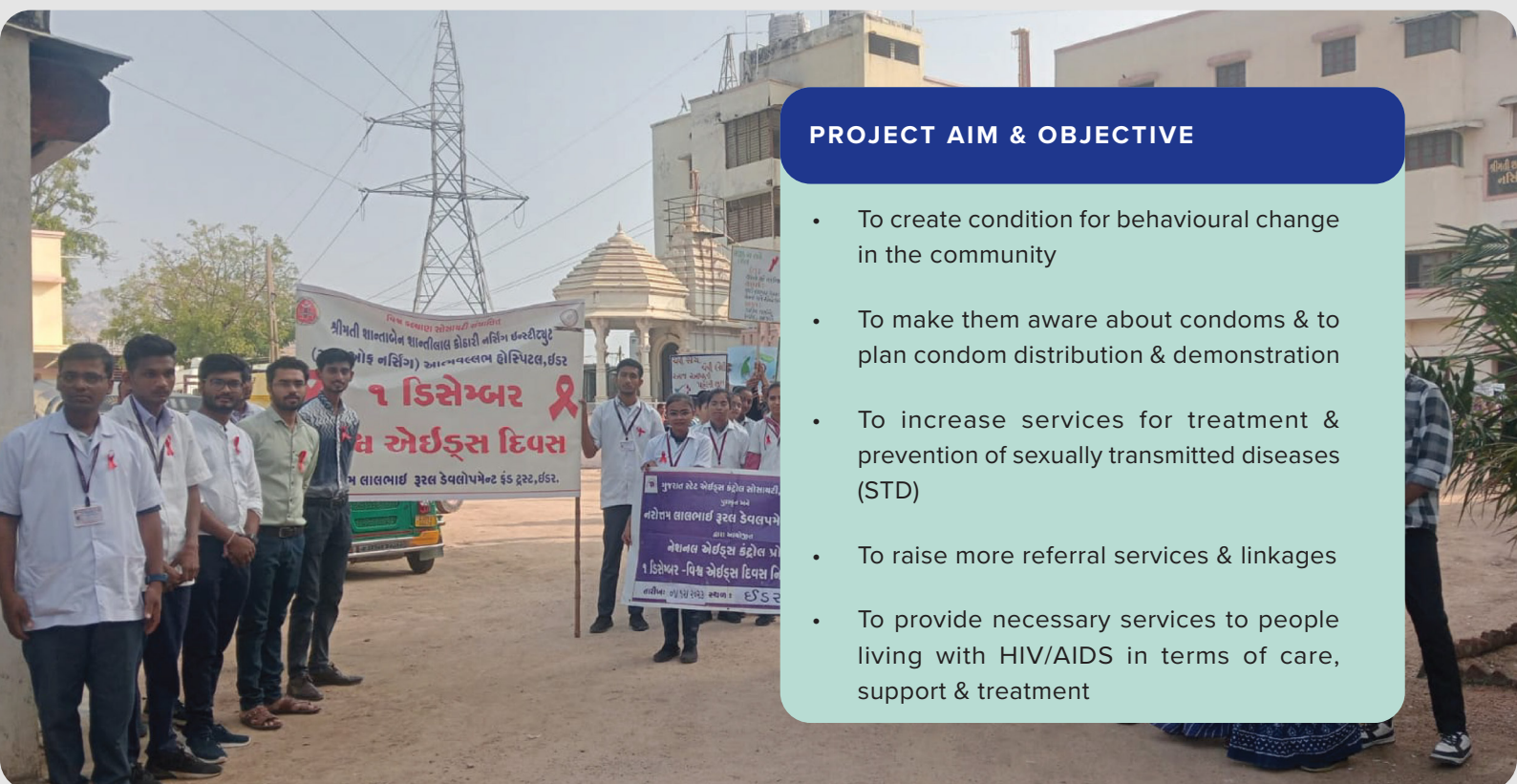


NATIONAL AIDS CONTROL PROGRAMME

INTRODUCTION

NLRDF is implementing the project in five talukas of Sabarkantha district with the support of National AIDS

Control Organisation (NACO), New Delhi, & Gujarat State AIDS Control Society (GSACS), Ahmedabad.



PROJECT AIM & OBJECTIVE

- To create condition for behavioural change in the community
- To make them aware about condoms & to plan condom distribution & demonstration
- To increase services for treatment & prevention of sexually transmitted diseases (STD)
- To raise more referral services & linkages
- To provide necessary services to people living with HIV/AIDS in terms of care, support & treatment

The diverse activities implemented by NLRDF under the project are as mentioned below:

- One to one – individual & group meetings
- Monthly & quarterly DIC meetings
- Demand generation meeting
- Quarterly crisis committee meetings
- Event program
- Health camp & exhibition
- Advocacy meetings
- Quarterly STI committee meetings
- Monthly PE meetings

- Weekly staff review meeting
- Red Ribbon Club program

The following services were provided under the project:

- RMC & HIV testing
- Services to HIV affected people & Counseling

Four health camps in association with Urban Health Centre of Himmatnagar & Vadali were organized during the year. During these camps, organization planned screening services & condom awareness.

WORLD HEPATITIS DAY CELEBRATION

World Hepatitis Day was celebrated under the theme “One Life One Liver” & detailed information was provided on the following topics.

- What is Hepatitis
- How Hepatitis is treated
- Types of Hepatitis
- How Hepatitis spreads
- Information about Hepatitis testing
- Information about the toll-free number 1800-11-6666

TRANS GENDER CARD

Under the TI project by the Social Welfare Department, Trans Gender cards were issued to 72 MSM individuals. Currently, the importance of this card lies only in its issuance. In the future, if any benefits are provided by the government, the cardholders will be included through this card.

CELEBRATION OF RAKSHABANDHAN

Rakshabandhan was celebrated on 26/08/23 & 27/08/23 at the police sub inspector office in Khedbrahma. Around 150 police officers from all three police stations were tied rakhis by FSW sisters. Additionally, all the police officers were briefed about the work of the TI project. The police assured the organization that they would assist if any issues arose in their operations.

HIV/AIDS EXHIBITION & SERVICES FOR PILGRIMS ON BHADARVI POONAM

The exhibition was open at Idar from September 22, 2023, to September 25, 2023. The organization's Project Director, Mr. Kantibhai Patel, was present at the inauguration, & the organization donated 2500 rupees for this event. Approximately 4000 pilgrims walking to Ambaji viewed the HIV/AIDS exhibition. The organization's staff provided continuous rest services for four days.

WORLD AIDS DAY CELEBRATION

NLRDF, with support from Gujarat AIDS Control Society (GACS), organized World AIDS Day celebrations in Idar, Khedbrahma District, to raise awareness about HIV/AIDS prevention & demonstrate international solidarity in combating the epidemic. Approximately 900 individuals participated in the event, which

included a rally starting from AtmaVallabh Hospital & concluding at Idar Bus Depot. Around 200 to 250 students joined the rally, while lectures provided information on HIV/AIDS, STIs, & ART. The event at ITI College, attended by the Principal & professors, benefited about 200 students, & In-charge Principal Natubhai Patel addressed approximately 250 students, educating them about activities under the Targeted Intervention (TI) program.



PROJECT ACTIVITIES

NO.	NAME OF ACTIVITIES	ACHIEVEMENT (IN NUMBER)
1.	Coverage	1246
2.	STI Cline Visit	4547
3.	Regular Medical Check -Up	4389
4.	Presumptive Treatment	139
5.	STI Treatment	19
6.	HIV Testing	2140
7.	RPR Testing	2189
8.	Counseling	1958
9.	Free Condom Dist.	164164
10.	Hotspot Meeting	96
11.	PE Review Meeting	12
12.	PD Review Meeting	12
13.	PMC Commit. Meeting	04
14.	STI Committee Meeting	04
15.	DIC Committee Meeting	04
16.	Crisis Committee Meeting	04
17.	DZC Meeting	36
18.	Advocacy Meeting	03
19.	World AIDS Day	01
20.	Health camp	04
21.	Lubes Distribution	16170
22.	Regular Contact	14075
23.	Review Meeting	48
24.	TB Screening	3452
25.	Hepatitis B Testing	242
26.	TB Testing	63

SAMPOORNA SURAKSHA PROJECT

Sampoorna Suraksha is a new initiative by NACO under the National AIDS Control Program - V, Ministry of Health and Family Welfare, New Delhi. It aims to provide integrated health services to individuals at risk of HIV & STIs who are not associated with Targeted Intervention (TI) and Link Worker Scheme (LWS). The initiative focuses on reaching people not

identified as High-Risk Groups (HRGs) but still at risk, offering a comprehensive package of need-based support services to help them remain HIV negative and maintain overall health. Sampoorna Suraksha Kendra (SSK) operates in Sabarkantha District, based at the Civil Hospital in Himmatnagar.



PROJECT ACTIVITIES

NO.	DETAILS OF ACTIVITIES	ACHIEVEMENT (IN NUMBER)
1.	No. of Centres Reporting	1
2.	No. of Centre Registered	136
3.	Client History	98
4.	Risk Assessment	105
5.	No. of Partners	28
6.	Client Visits	122
7.	HIV tests	21
8.	Clinic Visits	6
9.	SIT Visits	134
10.	Syphilis Screening	90
11.	Hep-B Screening	82
12.	Hep-C Screening	75



VOCATIONAL TRAINING PROGRAMME

FOR VULNERABLE WOMEN

INTRODUCTION

This training was supported by Gujarat Women Economic Development Corporation Ltd. Gandhinagar. The objective of the programme was to help vulnerable women and help them sustain their lives by providing them training of entrepreneurship.

During the training, the participants were given sessions of theory & practical which included concept, types of business, analysis of cost & benefits. At the end of the training women received certificate and Stipend Rs. 1000 per Month. Now women were economically strengthened & became sustained as women started earning. They are very happy & they will do their own work. This will help them to live with dignity.

NO.	TRADE	PLACE OF TRAINING	DURATION	NO. OF PARTICIPANTS
1.	Tailoring & Cutting	Khedbrahma	4 Months	21
2.	Mehendi Designing	Vaktapur - Himatnagar	2 Months	21



HEARTFULLNESS & MEDITATION

AWARENESS PROGRAMME

INTRODUCTION

NLRDF has been actively involved in village development in Sabarkantha district for 46 years. To address local mental stress, NLRDF launched meditation programs at village & school levels in 2016-17.

In April 2023, the Heartfulness Institute initiated the Ekatma Abhiyan campaign in Madhya Pradesh, with 34 NLRDF staff members conducting relaxation, meditation, cleaning & prayer sessions across 250+ villages in Malhargarh, Manwar, Bagh & Kukshi areas. A two-day workshop in Indore, featuring Mr. Punit Lalbhai, Vice Chairman of Arvind Limited, provided insights into Heartfulness activities.

Following success in Madhya Pradesh, the Ekatma Abhiyan expanded to Gujarat on August 8, 2023, at the Heartfulness Institute Adalaj. NLRDF conducted training sessions on September 19-20, 2023, focusing on relaxation, meditation, cleaning & prayer, including lessons on meditation & yoga. Post-training, NLRDF organized sessions in 220 villages across Idar, Vadali & Khedbrahma talukas in Sabarkantha district, supported by village volunteers. 105 volunteers received specialized training at the Heartfulness Center in Adalaj to facilitate weekly sessions.

Currently, 49 villages are hosting weekly sessions with enthusiastic community participation. Additionally, Dhyanoatsav (meditation festivals) were held in Kabso (205 participants), Fichod (233 participants) & Kalol (190 participants) villages.



BIOCHAR PROGRAMME



INTRODUCTION

Biochar training for BCI project staff was conducted at Kanha Shanti Vanam in Hyderabad to familiarize them with biochar production methods & its application for enhancing soil fertility.

During the training, participants were organized into five groups:

1. Rainforest
2. Rainwater harvesting
3. Trail field
4. Nursery
5. Yatra garden

The training included visits to experimental plots where biochar was applied to chili & tomato plants. Participants learned about plotting methods, precautions, measuring biochar usage & how to monitor & record observations regularly.

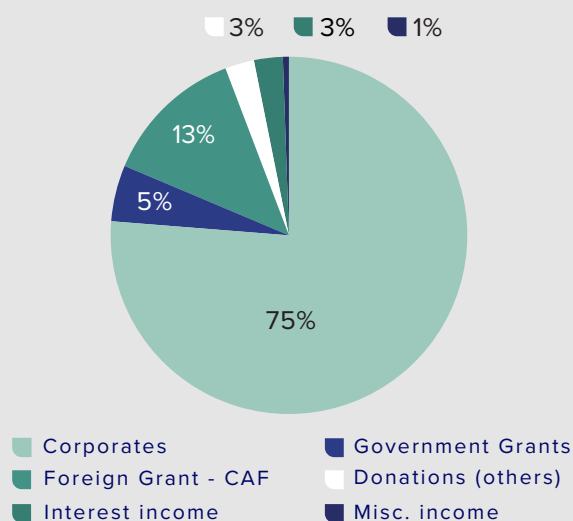
BIOCHAR DEMONSTRATION

During the visit to Kanha Shanti Vanam, demonstrations were conducted for three BCI projects. Wheat crop demonstrations took place in Nanvana village, Khedbrahma; eggplant crop demonstrations were held in Finchod & Kabso villages, Idar taluka; & onion crop demonstrations were also conducted. Local residents from surrounding areas visited these sites to deepen their understanding of biochar.

BIOCHAR PRODUCTION UNIT

A biochar production unit has been established at Jalia, Idar through a joint initiative of Kanha Shanti Vanam and NLR. This unit is designed to produce biochar from cotton sticks to use it to enhance soil fertility in farmers' fields. Over 100 tons of cotton sticks have been collected & the process of producing biochar from them has begun.

FINANCIAL HIGHLIGHTS

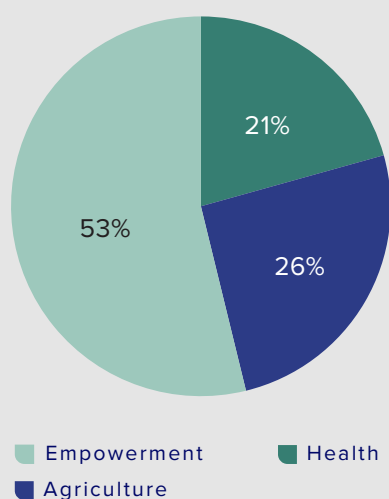
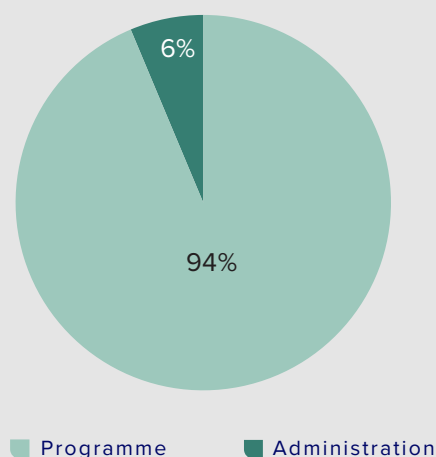


AMOUNT RECEIVED

SOURCE OF FUNDS	RS. LAKHS	%
Corporates	432.78	75%
Government Grant	28.87	5%
Foreign Grant - CAF	72.95	13%
Donations (others)	15.00	3%
Interest income	14.80	3%
Misc. income	3.11	1%
TOTAL	567.51	100%

AMOUNT SPENT

USE OF FUNDS	RS. LAKHS	%
Programme	561.86	94%
Administration	37.90	6%
TOTAL	599.76	100%



AMOUNT SPENT ON PROGRAMMES

PROGRAMMES	RS. LAKHS	%
Health	116.12	21%
Agriculture	143.35	26%
Empowerment	302.39	53%
TOTAL	561.86	100%

ACKNOWLEDGEMENT

GOVERNMENT DEPARTMENTS

Women & Child Development – Gandhinagar
Gujarat State AIDS Control Society – Ahmedabad
Gujarat Women Economic Development Corporation – Gandhinagar
Sardar Krushi University – Dantiwada
District Development Officer – Baroda

INSTITUTIONS

UNICEF – Gandhinagar
Samunnati Foundation – Chennai
Kanha Shantivanam – Hyderabad
Disha Foundation
Horticulture Institute – Hyderabad

CORPORATES

Farmson – Baroda
Arvind Ltd.
Pelican Group
Reliance Foundation

OUR PARTNERS



MAKE A DIFFERENCE

NLRDF has been committed to transforming lives & building resilient communities for the last 46 years. Our experience of development in **community mobilization, project planning, implementation, monitoring & evaluation are recognized as strengths.** Consequently, NLRDF has partnered with organizations like UNICEF, GSACS, ONGC, CottonConnect, Arvind Ltd., K.K.Vithani Foundation, Reliance Foundation, NABARD, FED BANK, CHETNA & the Government of India.

NLRDF provides a complete account of the funds received for various projects & sends its annual report to every donor. If you wish to join our endeavour & are looking for an organisation that will channelise & direct 100% of your contribution to the projects at hand, Narottam Lalbhai Rural Development Fund (NLRDF) may be a good option. We welcome your financial support for us to continue the mammoth task at hand. If you wish to sponsor any project(s) please write to kanti.patel@arvind.in.

Contributions or donations to NLRDF qualify for tax exemption under Section 80G of the Income Tax Act, 1961.

NLRDF is registered under Foreign Contribution Regulation Act 1976 for accepting any foreign contributions & grants with Registration No: 041910009 dated 8.1.1985.



The donation amount may be remitted, along with the requisite information with respect to how you wish to participate by drawing a cheque in favour of Narottam Lalbhai Rural Development Fund & sending through NEFT/RTGS as per the details below:

INDIAN CURRENCY

Name	: Narottam Lalbhai Rural Development Fund
Bank	: State Bank of India
Branch	: Naroda Road, Ahmedabad
A/C No	: 56122003554
IFSC	: SBIN0003045

FOREIGN CURRENCY

Name	: Narottam Lalbhai Rural Development Fund
Bank	: State Bank of India
Branch	: 11, Parliament Street, New Delhi, 11001
A/C No	: 40102377350
IFSC	: SBIN0000691

TRUST INFORMATION

TRUSTEES

Shri Samveg A. Lalbhai
Designation : Chairman

Qualification : B.Com.
Occupation : Industrialist

Shri Anang A. Lalbhai
Designation : Trustee

Qualification : B.Com.-MBA
Occupation : Industrialist

Mrs. Jayshree S. Lalbhai
Designation : Trustee

Qualification : B.A. M.Ed.
Occupation : Social Services

Mrs. Anamika S. Lalbhai
Designation : Trustee

Qualification : B.A. (Hons)
Occupation : Social Service

MANAGEMENT

Shri B. M. Shah
Designation : Executive Director

Qualification : M.Com., F.C.A., LL.B.,CISA (USA)
Occupation : Service

Shri K. P. Patel
Designation : Chief Manager

Qualification : B.Com., LLB
Occupation : Service

RECOGNITIONS:

NLRDF is a Voluntary Organisation registered under the Bombay Public Trust Act 1950 as Charitable Trust (Reg. No. E/3296/29.7.1978 & also u/s 12A of the Income Tax Act.1961 No. N-83/AR.V. AAATN1153BE20214 valid till 2026-27.

All individual & corporate donations are eligible for exemption under u/s 80.G vide their letter No. DIT (E) /80G(S) AAATN1153BE20214 valid till 2026-27.

NLRDF is registered under Foreign Contribution Regulation Act 1976 for accepting foreign donations & grants vide Registration No: 041910009 valid till 30-09-2027.

NLRDF is registered for CSR activities, & the Registration number is CSR00007231, dated 31-05-2021.

નરોત્તમલાલભાઈ રૂચલડેવોલોપમેન્ટ દ્વારા રહેડા ગામની પ્રાથમિક શાળા અને માધ્યમિક શાળામાં વિદ્યાર્થીઓ માટે પૃથકવિસ્તર બનાવવો જાગૃતિ અભિયાનની ચિત્ર સ્પર્ધાનું આયોજન કરવામાં આવ્યું હતું. જેમાં સર્વે સરકાર જેટલા બાળકોએ ભાગ લીધો હતો. જેમાં દરેક બાળકોએ ડ્રોઈંગ કરવા માટે ડ્રોઈંગ પેપર અને કલર સંકેત પેનનું વિતરણ કરી ચિત્ર સ્પર્ધા નું આયોજન કરવામાં આવ્યું હતું. ત્યારબાદ સ્પર્ધામાં પ્રાથમિક અને માધ્યમિક સ્કૂલના બાળકોમાં જેમને એક બે ત્રણ નંબર આપ્યા હતા તેઓને પ્રોત્સાહન સ્વરૂપે ઈનામ આપવામાં આવ્યા હતા.

(તસ્વીર:- હસમુખ પંચાલ, ખેડબ્રહ્મા)



ગુજરાત વિકાસ ન્યૂઝ, હિંમતનગર : હેમચંદ્રાચાર્ય ઉપર ગુજરાત યુનિવર્સિટી સંત્રાન મહિલા આર્ટ્સ કોલેજ, વિદ્યાનગરી, હિંમતનગર ખાતે નરોત્તમ લાલભાઈ રૂરલ ડેવલપમેન્ટ ફંડ, ઇન્ડર દ્વારા ચાલતા ‘૨૬ સીબીન કલબ’ અને કોલેજ ના એન.એસ.એસ. યુનિટના સંયુક્ત ઉપક્રમે સંસ્થાના ખિન્તિપાલ ડૉ. કૌસાયાલાલ એલ પટેલ ના આચાર્ય સ્થાને “ઐયરડ્સ જનમિતિ માર્ગદર્શન વર્કશોપ” યોજાયો. સંસ્થાના ખિન્તિપાલ ડૉ. કે. એલ. પટેલે મહેમંબીનું સ્વાગત કરી, પોતાના વક્તવ્યમાં “સ્વચ્છ ભુવન માટે આહાર, વિકાર અને સંક્રમણ, મહત્ત્વ સમજાવી, ઐયરડ્સ સેમીનાર સાથેયોતી અંગે માર્ગદર્શન આપ્યું હતું. વક્તા એને પ્રોજેક્ટ મેનેજર મહેન્દ્રભાઈ વલકારે ઐયરડ્સ જનમિતિ અંગે સુંદર માર્ગદર્શન પૂરું પાડ્યું હતું. આ વર્કશોપમાં યોજાયેલ વક્તૃત્વ સ્પર્ધામાં પ્રથમ ક્રમે કુ.નિતા એમ. પટેલ, બીજા ક્રમે પૂજા એસ. ચૌહાણ, ત્રીજા ક્રમે કુ. તન્વી એસ. રાણે વિજેતા બન્યા હતા. વર્કશોપમાં કોલેજની ૨૦૦ જેટલી વિદ્યાર્થીનીઓએ ભેડાઈ હતી. કાર્યક્રમનું સંચાલન ડૉ દિપ્પા સાવલએ અને આયોજ દર્શન ડૉ પી એસ પટેલ કર્યું હતું. આવા સુંદર કાર્યક્રમના આયોજન માટે મંડળના પ્રમુખ ડૉ. ડી એલ પટેલ અને ટ્રસ્ટી મહેન્દ્રભાઈ પટેલે આયોજકોને અભિનંદન આપી, શુભેચ્છાઓ પાઠવી હતી.



આધા મહતી સ્પેશ્યાલીટી હોસ્પીટલ અને નરોત્તમ લાલભાઈ રૂઝલ ડેવલોપમેન્ટફંડસંસ્થાના સહયોગથી વડાલી મુકામે તારીખ ૧૧-૨-૨૪ ના રોજ સર્વરોગિનિ:શુદ્ધિ નિદાન કેમ્પ યોજાયો હતો. આ કેમ્પમાં નિદાન માટે ફ્રીકોશીયલ, ગાયનેક, કેન્સર અને ઓર્થોપીડિક જેવા તમામ ડોક્ટરની ટીમ હાજર રહીને કેમ્પમાં આવનાર તમામ દર્દીઓની તમાસ કરીને જરૂરી માર્ગદર્શન અને દવાઓ આપવામાં આવી હતી. વડાલી, ખેડબ્રહ્મા અને હડર તાલુકાના ગામોમાંથી ૨૦૯ દર્દીઓએ લાભ લીધો હતો. (તસ્વીર:- હસમુખ પંચાલ, ખેડબ્રહ્મા)



હાર્દફૂલને સરંસ્થા અમદાવાદ અને રોટમલાલભાઈ રૂટલડેલપમેજ
ફંડ સરંસ્થા દ્વારા વિનામૂલ્યે ધ્યાનોત્સવ નો કાર્યક્રમ ખેડછા તાલુક
ના કલોલ ગામે તારીખ ૧૨/૩/૨૦૨૪ થી ૧૪/૩/૨૦૨૪ તારીખ સુધી
રાખવામાં આવ્યો હતો. ધ્યાનથી થતા ફાયદા અને ધ્યાન કરવાની સાચી
પદ્ધતિ વિશે આ ક્ષેત્રના નિષ્ણાંત દ્વારા સમજ આપવામાં આવી. અ
કાર્યક્રમમાં આવુ ખાબુ અને ગામના ભાઈ બહેનો હાજર રહીને કાર્યક્રમ
ને સફળ બનાવવામાં આવ્યો હતો.

(પ્રતીક:- કસમામ પાંચાલ ખેડતર્યા)



વડોદરા રેલવે 1 અને રેલવે 2 ઘટકના 30 ગામોમાં 151 આંગણવાડી કેન્દ્રમાં કાર્યરત છે. આ પ્રોજેક્ટ અંતર્ગત તા. 8 થી 13 જાન્યુઆરી દરમિયાન સગર્ભા અવસ્થા થી બાળકનું 2 વર્ષ દરમિયાન એક હાજર દિવસ સુધી કાળજીના મહત્વ વૃદ્ધિ મેપોષણયુક્ત આહાર તથા બાળક 2 વર્ષનું થાય ત્યાં સુધી બાળકના વિકાસ, વૃદ્ધિ માટે માતા તથા પરિવારને લેવાની કાળજી એક આંગણવાડી કાર્યકર્તાઓને તાલીમ આપવામાં આવી હતી.



(પ્રતિનિધિ)બેઝહામ,
નરોત્તમ લાલભાઈ રૂરલ
વિલમપમેન્ટ ફંડ અને અરવિંદ
વિમલેટડના સંયુક્ત ઉપક્રમે તારીખ
૨૮/૦૩/૨૦૨૪ ના રોજ વડાકી
સુધાકર ખેત સંમેલનનું આયોજન
કરવામાં આવ્યું હતું. બેટર કોન
(BCI) પ્રોજેક્ટ અંતર્ગત જે
ખેડૂતોએ કૃષિ ક્ષેત્રે સજીવ ખેતી
અને પ્રાકૃતિક ખેતીમાં ઉમેદા કાપ્યું
કર્યું હતું તેમના અનુભવો ની આધાર
લે કરવામાં આવી હતી અને તેમને
મોડેસાહન આપી માન આપવામાં
માયા હતા.

કૃષિ વૈજ્ઞાનિક જગદીશભાઈ
ટેલે કપાસ ઉગાડતા ખેડૂતો ને
ઘાટોજન ની માત્રા જાળવવાની
ધ્ધતિ અને ખાતરનો સમય
ચક્રતા થી ઉપયોગ કરવાની

દક્ષિણ સમજાવી હતી. અરવિંદ
લેમિટેડના ચીફ મેનેજર શ્રી
સમીરભાઈ પ્રજ્ઞપતિએ ગુજરાતના
જયપાલ શ્રી દેવવ્રત દ્વારા
રુક્ષેત્રમાં પ્રાકૃતિક ખેતી ઉપર ફરેલ

કામ, અખતરા અને સંશોધન વિ-
સમજ આપી હતી. કૃષિ વૈજ્ઞાનિક
કેન્દ્રના વૈજ્ઞાનિક ડૉ. એસ.
આચાર્ય અને શાકભાજીની ખેત-
કરવામાં રાખવી પડતી કાળજી
જવામુત ખાવાવાની પદ્ધતિ અને
ઉપયોગ વિશે વિસ્તૃત માહિતી આ-
પી હતી. નરામન લાલભાઈ ડર-
ડેવલપમેન્ટ ફંડ સંસ્થાના પ્રતિનિધિ
વિનોદભાઈ દેસાઈ એ ગ્રામીણ સે-
સજીવ ખેતીની સાથે સાથે
આજીવિકા વૃદ્ધિ અને મેડીટેશન
વિશેની સમજ આપી હતી. અંતર-
હાર્ટફૂલનેસ અને આડાજીવન
મુકાબલાઈ બારોડે હાર્ટફૂલનેસ
સંસ્થાની કામગીરી વિશે સમજ
આપીને ધ્યાન કરવાની પદ્ધતિ વિ-
સમજ આપી બધા ખેડૂતોને ધ્યાન
કરવું હતું.



सीतामऊ । मन पर काबु पाने के लिये ध्यान महत्वपूर्ण है। निरंतर ध्यान एवं योग करने से व्यसन व नशों पर काबु पा सकते हैं। आज युद्ध, खेलकूद और योग से दूर जा रहे हैं,जिससे नशों की लत बढ़ती जा रही है। बच्चों में मोबाईल का चलन बढ़ता जा रहा है,बच्चों को खेल और योग,ध्यान से जोड़े तो निश्चित मोबाईल से बच्चों का मोह भंग हो जाएगा। यह बाद मध्यप्रदेश जनअभियान परिषद के विकासखण्ड समन्वयक नारायणकिशोर निनामा एवं नवांकुर संस्था नाटयाम प्रगतिशील विकास समिति के कार्यक्षेत्र समन्वयक हरिओम गंधर्व ने रणायरा,कोटा व बहादुर एवं रिस्थल में हार्टफुलनेस संस्था,हैदराबाद द्वारा आयोजित ध्यान एवं योग शिवीर में कही। श्री निनामा ने कहा की सीतामऊ विकासखण्ड में हार्टफुलनेस संस्था हैदराबाद के 12 सदस्यों की टीम निरंतर नवांकुर संस्था एवं परामर्शदाताओं के सहयोग से गांव-गांव में योग व ध्यान शिवीर का आयोजन कर रहे हैं। 21 जुन को 1 करोड़ लोगों को योग साध योग करने के लिये जनअभियान परिषद निरंतर ग्रामीण क्षेत्रों में कार्य कर रहा है। ग्राम पंचायतों में सरपंच,सचिव एवं सहयोगी सचिव,आंगनवाडी कार्यकर्ता,सहायीका,आशा कार्यकर्ताओं के साथ जनप्रतिनिधियों एवं ग्रामीणजनों का सहयोग मिल रहा है। गुजरात से आये ध्यान एवं योग के प्रशिक्षक विरम भाई एवं पारास भाई ने बताया कि निरंतर योग,ध्यान करने से स्वास्थ्य के साथ ही मन भी स्वस्थ रहता है जो निरंतर योग व ध्यान करता है,उसे निंद भी अच्छी आती है। योग शिवीर के पश्चात के बाद नशे मुक्ति हेतु शपथ दिलाई गई एवं नशा छोड़ने वाले व्यक्तियों को चिन्हित कर जिला चिकीत्सालय मंदसौर हेतु काउंसिलिंग की गई।



मंदसौर/सातामऊ, 29 मई। म
रांती एवं सुख पाना चाहते हो तो जी
योग एवं ध्यान की निरंतरता आवश्य
मन के साथ ही क्रोध पर भी काबु
चाहते हो तो ध्यान, सफाई एवं प्रार्थना
आवश्यक हैं। ईश्वर को मन से याद क
निष्ठा की जीवन के लिए जो बातें

पाएंगे। दिन-भर क कार्यों से निवृत्त होकर हमें सोचें को मन की सफाई करना चाहिए और ईश्वर से प्रार्थना करना चाहिए कि हमारे द्वारा किया को ठेस नही पहुंचे।

या बात नाराहण, खजुरीगढ़ावत एवं इलाहा में मध्यस्थता एवं अधिपान परिपक्व एवं इहं दुर्लभ संस्था हैदराबाद द्वारा

अधोपनिषद् विचार एवं प्रवचन में प्रकाश

[illegible]



Narottam Lalbhai Rural Development Fund

ADMINISTRATIVE OFFICE

Mr. K P Patel – Chief Manager
Narottam Lalbhai Rural Development Fund
(NLRDF) Arvind Premises, Naroda Road,
Ahmedabad 380025
Email : kanti.patel@arvind.in
Website : nlrdf.org
Telephone: 079-68268760/61

OUR AUDITOR

Sorab S Engineers & Co.
804, Sakar – IX, Near Old RBI
Ashram Road, Ahmedabad-380009

FIELD OFFICES

NLRDF, Behind Gayatri Mandir, Khedbrahma,
Sabarkantha

NLRDF, 35, Yoginagar Township, Chhani, Baroda

NLRDF, E-207 Damodar Complex, Opp- SBI, Idar,
Sabarkantha

NLRDF, 46, Uma Bungalow, Opp – Swaminarayan
Mandir, Idar, Sabarkantha